

LUX HOTELS



be lux, be unique

Brochura de Reuniões e Eventos

*Brochure of
Meetings & Events*



fatima.luxhotels.pt



fatimapark.luxhotels.pt



**Reuniões e Eventos
que não se
esquecem**

*Unforgettable
Meeting
Experiences*





Localização privilegiada, eventos multidisciplinares

Com 4 estrelas, o Hotel Lux Fátima Park e Hotel Lux Fátima situam-se em Fátima, mesmo ao lado do santuário. Encontram-se numa localização privilegiada pois estão em pleno centro de Portugal, o que facilita os encontros ou reuniões que juntam público dos mais diversos pontos do país. O aeroporto de Lisboa, o mais próximo da cidade de Fátima, situa-se a cerca de 115 Km sul e o do Porto está a 194 Km norte. Fátima é servida pela principal autoestrada do país A1 e tem uma rede de transportes rodoviários com ligações diárias para as principais cidades.

Porque não juntar ao seu evento uma atividade pedestre, um passeio a cavalo e de BTT, pelo maravilhoso Parque Natural das Serras de Aire e Candeeiros? Ou um workshop de nutrição e uma aula de yoga?

Atividades que aliadas à modernidade das nossas sete salas ajustáveis e à flexibilidade da nossa equipa irão contribuir decerto para a concretização de eventos emocionais e enriquecedores que perdurarão na memória dos seus clientes, parceiros ou colaboradores.

Prime location, multidisciplinary events

The 4-star, Hotel Lux Fátima Park and Hotel Lux Fátima are located in Fátima, right next to the sanctuary. It is in a privileged location because it is in the center of Portugal, which facilitates meetings or gatherings that bring together the public from across the country. Lisbon Airport, the closest to the city of Fatima, is about 115 km south and Porto is 194 km north. Fatima is served by the country's main highway A1 and has public transport with daily connections to major cities.

Why not add to your event a pedestrian activity, a horse riding and mountain biking, through the beautiful Natural Park of Serras de Aire e Candeeiros? Or a nutrition workshop and a yoga class?

Activities that combined with our seven modern adjustable rooms and the flexibility of our staff will certainly contribute to the realization of emotional and enriching events that will last in the memory of your customers, partners or employees.

Dispomos de sete salas de reuniões ajustáveis, com comodidades modernas, wifi de alta velocidade e ar-condicionado. Queremos concretizar as suas reuniões e eventos com todo o conforto, numa atmosfera calma e produtiva como a da região de Fátima.

We have seven adjustable meeting rooms with modern amenities, high speed wifi and air conditioning.

We want to carry out your meetings and events in comfort, in a calm and productive atmosphere like the one of the Fatima region.



Sala / Meeting Room

Auditório 1



Dimensões / Dimensions
comp / length 14,58 m x larg / width 10,90 m



M2 / Sqm
158,92



Plateia / Theater
132



Escola / School
80



Boardroom
-



Altura / Height
-



Mesa U / U shape
-

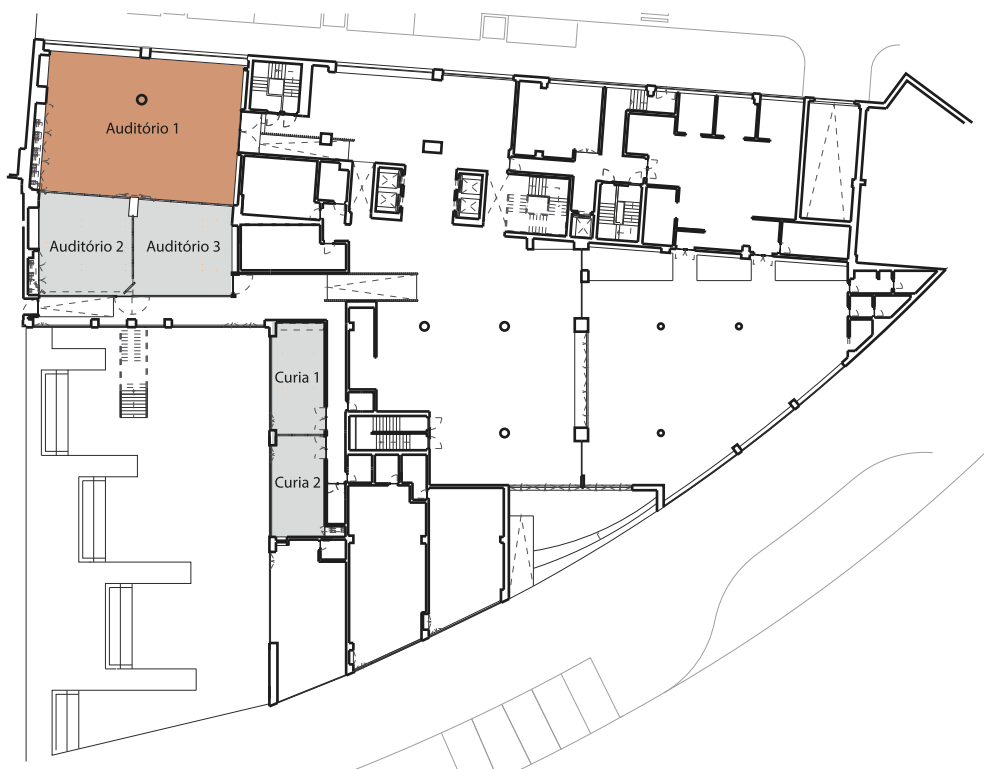


Cabaret
70



Set Menu
80

Piso / Floor 1



Acessos / Accesses

Nº de portas / N° of Doors **1**

Altura da porta / Door height **2 m**

Largura da porta / Door width **3 m**

Internet

Internet Wireless

Ligações elétricas / Electrical connections

Voltagem / Voltage **230**

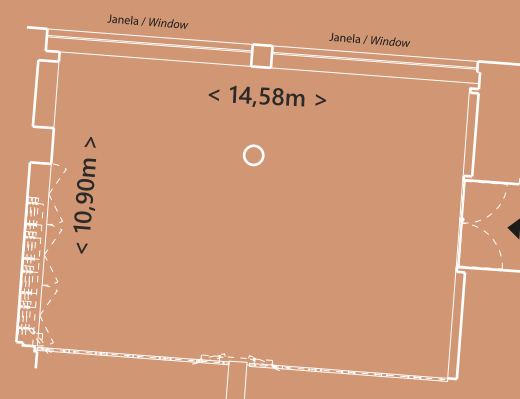
Amperes / Amps **16**

Climatização e Iluminação / Climatization and lightning system

Ar condicionado / Air conditioning

Luz natural / Natural light

Blackout



Sala / Meeting Room


Auditório 2


 Dimensões / Dimensions
comp / length 7,10 m x larg / width 6,98 m


 M2 / Sqm
52,02

 Plateia / Theater
40

 Escola / School
18

 Boardroom
20

 Altura / Height
-

 Mesa U / U shape
20

 Cabaret
25

 Set Menu
40

Piso / Floor 1



Acessos / Accesses

Nº de portas / *Nº of Doors* **1**

Altura da porta / *Door height* **2 m**

Largura da porta / *Door width* **1,3 m**

Internet

Internet Wireless

Ligações elétricas / Electrical connections

Voltagem / *Voltage* **230**

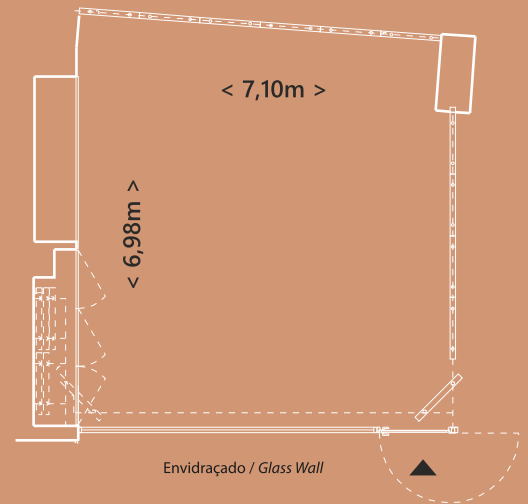
Amperes / *Amps* **16**

Climatização e Iluminação / Climatization and lightning system

Ar condicionado / *Air conditioning*

Luz natural / *Natural light*

Blackout



Sala / Meeting Room


Auditório 3


 Dimensões / Dimensions
comp / length 7,20 m x larg / width 7,50 m


 M2 / Sqm
51,03


 Plateia / Theater
40

 Escola / School
20

 Boardroom
20

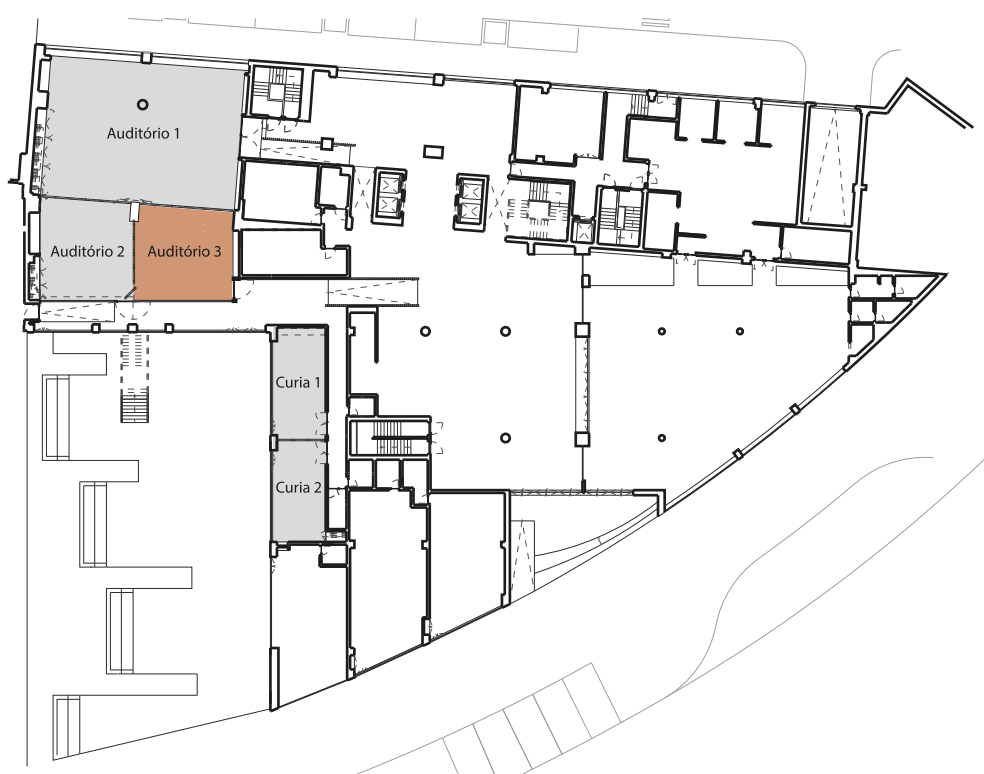
 Altura / Height
-

 Mesa U / U shape
20

 Cabaret
25

 Set Menu
40

Piso / Floor 1



Acessos / Accesses

Nº de portas / N° of Doors **1**

Altura da porta / Door height **2 m**

Largura da porta / Door width **1,4 m**

Internet

Internet Wireless

Ligações elétricas / Electrical connections

Voltagem / Voltage **230**

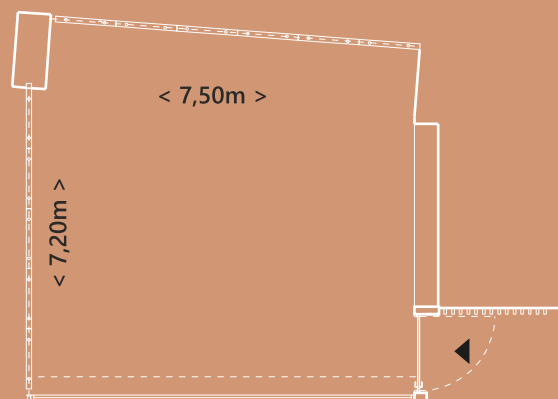
Amperes / Amps **16**

Climatização e Iluminação / Climatization and lightning system

Ar condicionado / Air conditioning

Luz natural / Natural light

Blackout



Envidraçado / Glass Wall



Sala / Meeting Room


Auditório 2+3


 Dimensões / Dimensions
comp / length 14,46 m x larg / width 7,16 m


 M2 / Sqm
104


 Plateia / Theater
70

 Escola / School
57

 Boardroom
36

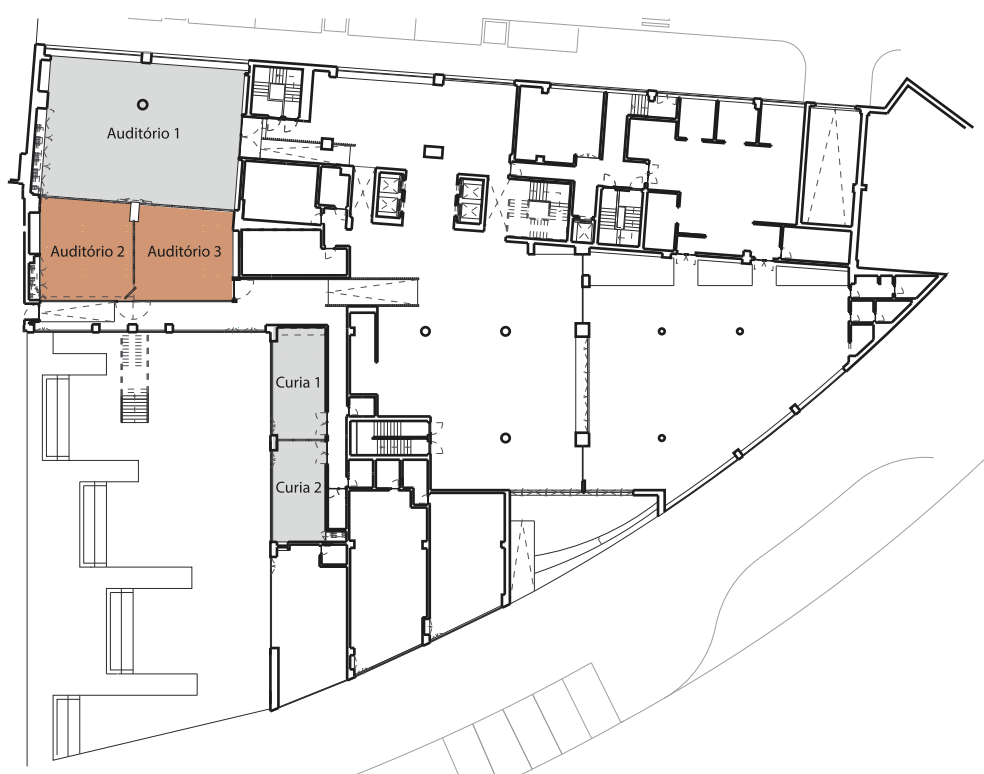
 Altura / Height
-

 Mesa U / U shape
36

 Cabaret
30

 Set Menu
48

Piso / Floor 1



Acessos / Accesses

Nº de portas / N° of Doors **2**

Altura da porta / Door height **2 m**

Largura da porta / Door width **1,4 - 1,3 m**

Internet

Internet Wireless

Ligações elétricas / Electrical connections

Voltagem / Voltage **230**

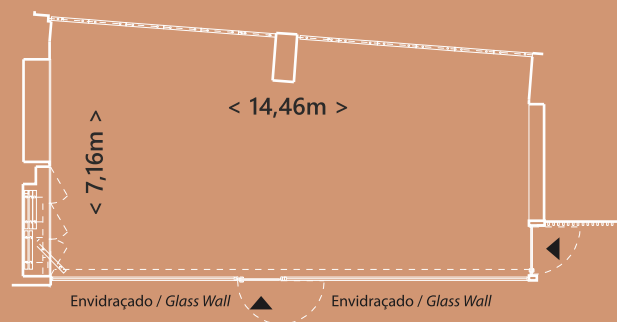
Amperes / Amps **16**

Climatização e Iluminação / Climatization and lightning system

Ar condicionado / Air conditioning

Luz natural / Natural light

Blackout



Sala / Meeting Room

Auditório 1+2+3


 Dimensões / Dimensions
comp / length 17,78 m x larg / width 14,74 m


 M2 / Sqm
264,49

 Plateia / Theater
200

 Escola / School
140

 Boardroom
-

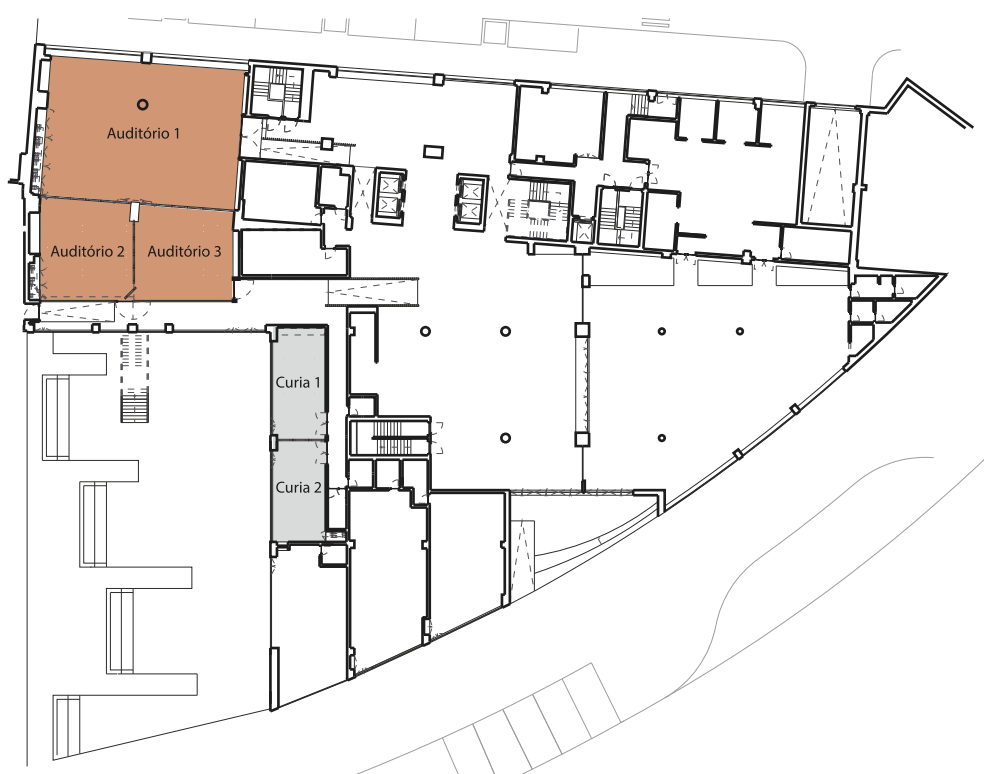
 Altura / Height
-

 Mesa U / U shape
-

 Cabaret
-

 Set Menu
180

Piso / Floor 1



Acessos / Accesses

Nº de portas / *Nº of Doors* **3**

Altura da porta / *Door height* **2 m**

Largura da porta / *Door width* **1,4 - 1,3 - 3,0 m**

Internet

Internet Wireless

Ligações elétricas / *Electrical connections*

Voltagem / *Voltage* **230**

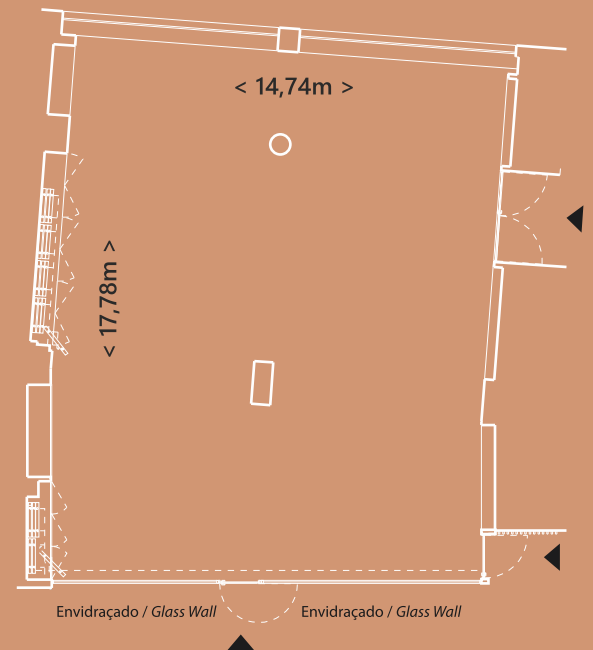
Amperes / *Amps* **16**

Climatização e Iluminação / *Climatization and lightning system*

Ar condicionado / *Air conditioning*

Luz natural / *Natural light*


Blackout



Sala / Meeting Room


Cúria 1

 Dimensões / Dimensions
comp / length 8,38 m x larg / width 3,95 m

 M2 / Sqm
30,51


 Plateia / Theater
24

 Escola / School
-

 Boardroom
18

 Altura / Height
-

 Mesa U / U shape
15

 Cabaret
-

 Set Menu
-

Piso / Floor 1



Acessos / Accesses

Nº de portas / *Nº of Doors* 2

Altura da porta / *Door height* 2 m

Largura da porta / *Door width* 1,3 - 1,7 m

Internet

Internet Wireless

Ligações elétricas / *Electrical connections*

Voltagem / *Voltage* 230

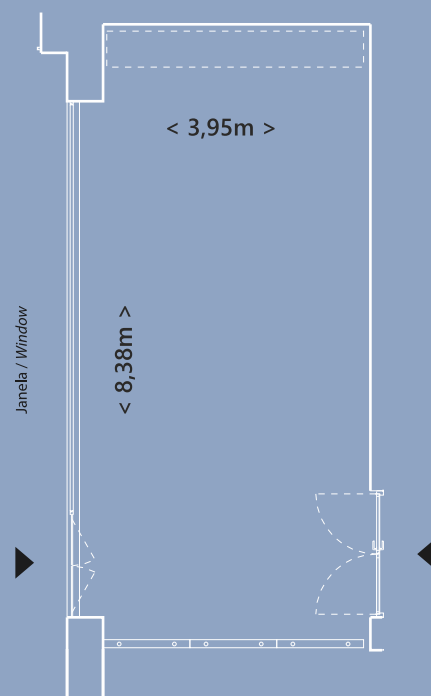
Amperes / *Amps* 16

Climatização e Iluminação / *Climatization and lightning system*

Ar condicionado / *Air conditioning*

Luz natural / *Natural light*


Blackout



Sala / Meeting Room


Cúria 2

 Dimensões / Dimensions
comp / length 7,56 m x larg / width 3,95 m

 M2 / Sqm
29,98


 Plateia / Theater
24

 Escola / School
-

 Boardroom
18

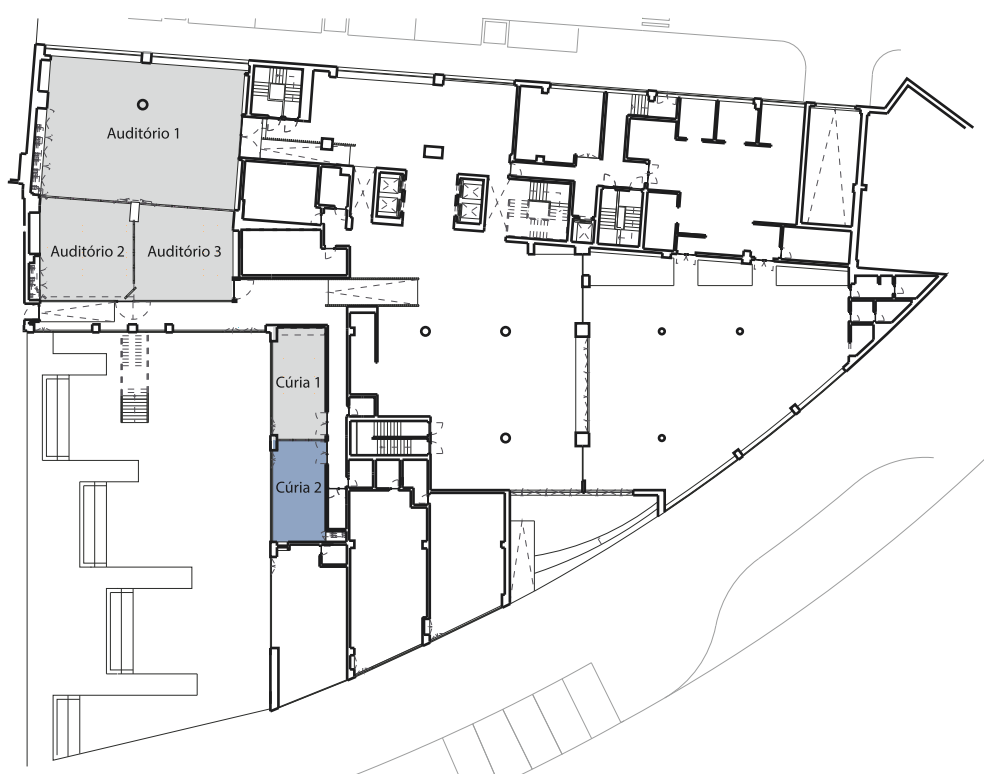
 Altura / Height
-

 Mesa U / U shape
15

 Cabaret
-

 Set Menu
-

Piso / Floor 1



Acessos / Accesses

Nº de portas / N° of Doors **2**

Altura da porta / Door height **2 m**

Largura da porta / Door width **1,3 - 1,7 m**

Internet

Internet Wireless

Ligações elétricas / Electrical connections

Voltagem / Voltage **230**

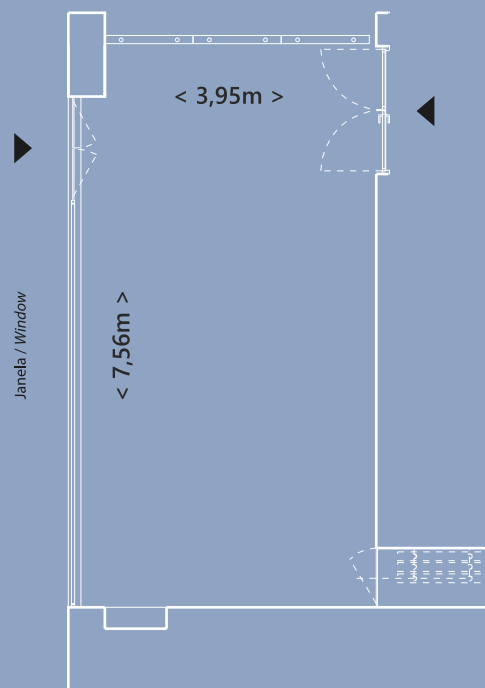
Amperes / Amps **16**

Climatização e Iluminação / Climatization and lightning system

Ar condicionado / Air conditioning

Luz natural / Natural light

Blackout



Sala / Meeting Room

Quórum 1



Dimensões / Dimensions
comp / length 10,80 m x larg / width 6,18 m



M2 / Sqm
66,31



Plateia / Theater
64



Escola / School
36



Boardroom
30



Altura / Height
-



Mesa U / U shape
28



Cabaret
20



Set Menu
40

Piso / Floor 2



Acessos / Accesses

Nº de portas / *Nº of Doors* 2

Altura da porta / *Door height* 2 m

Largura da porta / *Door width* 1,3 - 1,6 m

Internet

Internet Wireless

Ligações elétricas / *Electrical connections*

Voltagem / *Voltage* 230

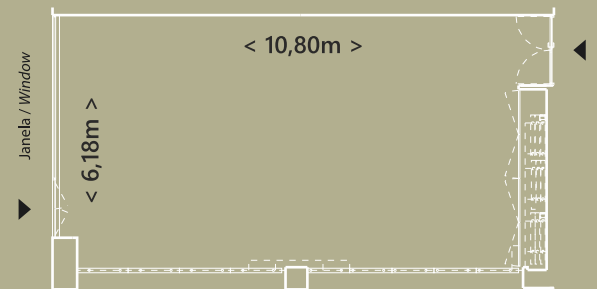
Amperes / *Amps* 16

Climatização e Iluminação / *Climatization and lightning system*

Ar condicionado / *Air conditioning*

Luz natural / *Natural light*


Blackout



Sala / Meeting Room


Quórum 2


 Dimensões / Dimensions
comp / length 10,80 m x larg / width 6,08 m


 M2 / Sqm
70,13

 Plateia / Theater
54

 Escola / School
24

 Boardroom
24

 Altura / Height
-

 Mesa U / U shape
22

 Cabaret
20

 Set Menu
48

Piso / Floor 2



Acessos / Accesses

Nº de portas / N° of Doors **3**

Altura da porta / Door height **2 m**

Largura da porta / Door width **2x1,3 - 1,6 m**

Internet

Internet Wireless

Ligações elétricas / Electrical connections

Voltagem / Voltage **230**

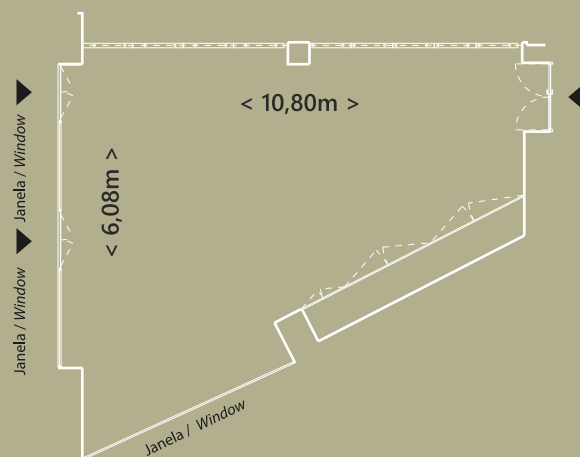
Amperes / Amps **16**

Climatização e Iluminação / Climatization and lightning system

Ar condicionado / Air conditioning

Luz natural / Natural light

Blackout



Sala / Meeting Room

Quórum 1+2



Dimensões / Dimensions
comp / length 10,80 m x larg / width 12,90 m



M2 / Sqm
139,86



Plateia / Theater
100



Escola / School
50



Boardroom
-



Altura / Height
-



Mesa U / U shape
-



Cabaret
40



Set Menu
96

Piso / Floor 2



Acessos / Accesses

Nº de portas / *Nº of Doors* 5

Altura da porta / *Door height* 2 m

Largura da porta / *Door width* 3x1,3 - 2x1,6 m

Internet

Internet Wireless

Ligações elétricas / *Electrical connections*

Voltagem / *Voltage* 230

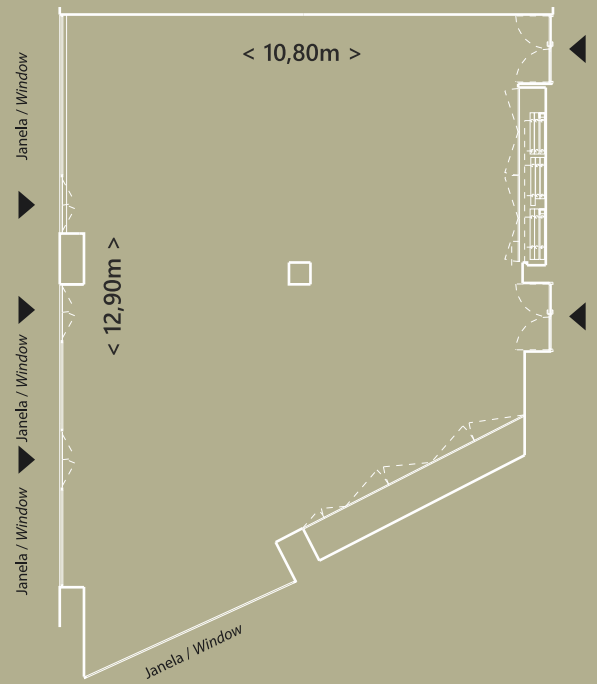
Amperes / *Amps* 16

Climatização e Iluminação / *Climatization and lightning system*

Ar condicionado / *Air conditioning*

Luz natural / *Natural light*

Blackout





De forma a facilitar e realçar a sua reunião, conferência ou evento, o Lux Fátima Park oferece um total de 121 unidades de alojamento, acesso a piscina exterior, circuito de Spa e ginásio, um restaurante, terraço e estacionamento privativo.

O terraço e o restaurante poderão ser reservados em regime de exclusividade para qualquer evento social, cultural ou de teambuilding.

A nossa equipa está ao dispor para o ajudar a criar um evento bem organizado, transformador e mostrar o que a região de Fátima tem de melhor.

To facilitate and enhance your meeting, conference or event, Lux Fátima Park offers a total of 121 accommodation units, access to an outdoor pool, spa circuit and gym, a restaurant, terrace and private parking.

The terrace and restaurant can be reserved exclusively for any social, cultural or team building event.

Our team is on hand to help you create a well-organized, transforming event and show the best of the Fatima region.

**Instalações modernas
que vão fazer brilhar
o seu evento.**

*Modern facilities
that will make
your event shine.*



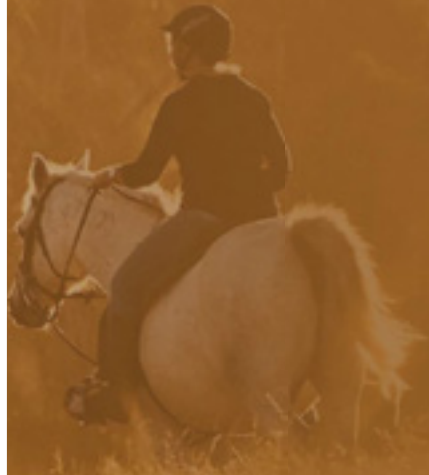


- Passeios a Cavalo
- Passeios de BTT
- Passeios Pedestres
- Todo-o-Terreno
- Aulas de Yoga
- Workshops de Nutrição
- Workshops de Mindfulness

- *Horse Rides*
- *Mountain Bike Tours*
- *Walking Tours*
- *All-terrain Rides*
- *Yoga Classes*
- *Nutrition Workshops*
- *Mindfulness Workshops*

Sugestão de Atividades

Suggested Activities



Informação e Contactos

*Information
and Contacts*

  /luxhotels

Para mais informação, para fazer uma consulta ou pedido de reserva, por favor contacte o departamento de reservas através de:

reservas@luxhotels.pt

+351 249 530 690

Se necessitar de serviços de audiovisuais, decoração e entretenimento, não deixe de nos consultar.

*For more information, to make an inquiry or reservation request,
please contact the Reservations Department by:*

reservas@luxhotels.pt

+351 249 530 690

*If you need any audiovisual, decoration and entertainment
services, do not hesitate to contact us.*

by **LUX**HOTELS